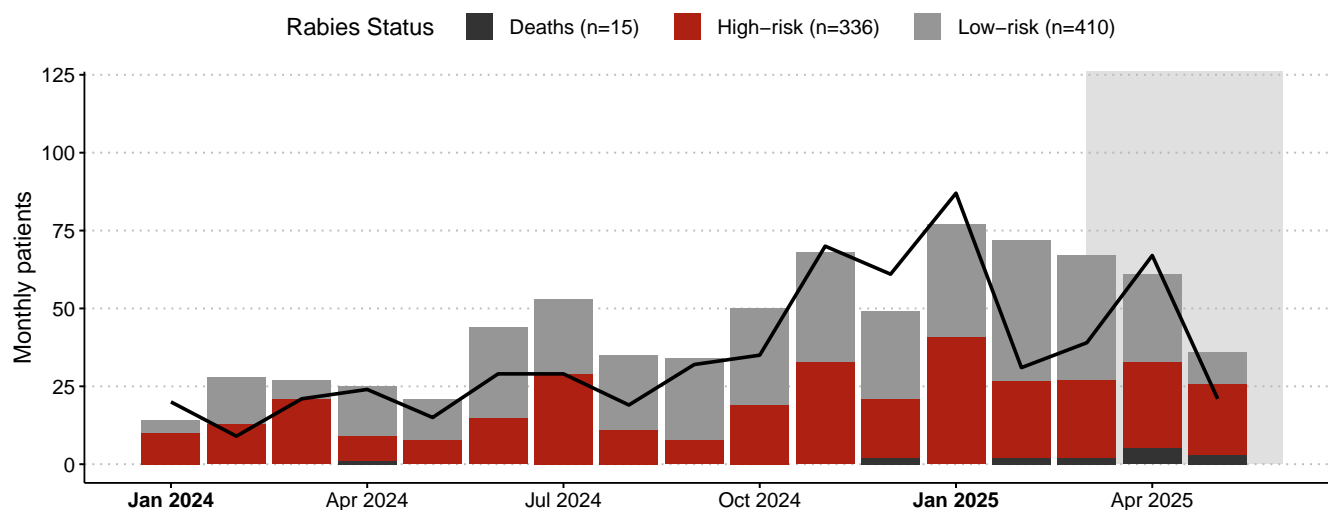


Mara Region

Quarterly Rabies Situation Report (Mar-May 2025)

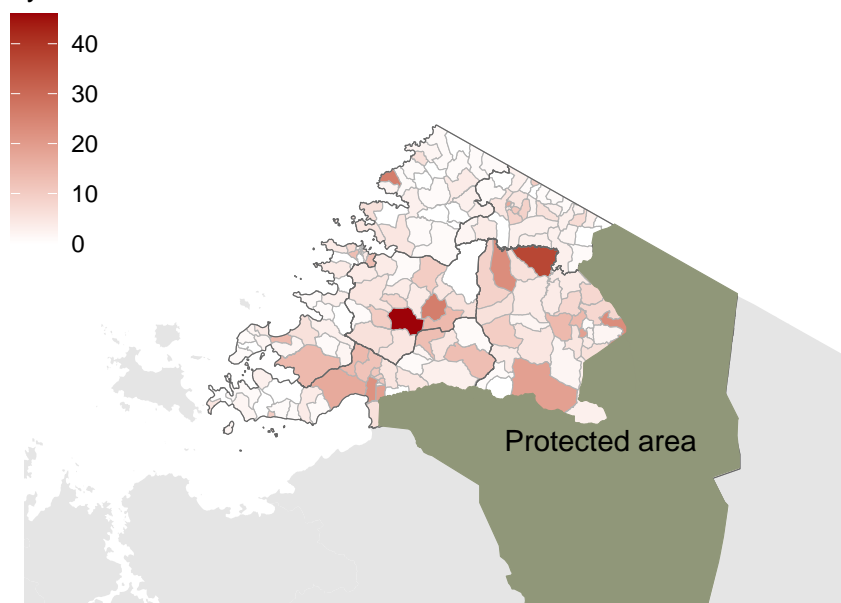
In the last three months (Mar-May 2025) there have been 76 high risk bite patients and 12 human deaths. 88 animals investigated have been suspect for rabies, with 28 confirmed.

Reported bite patients classified by rabies risk



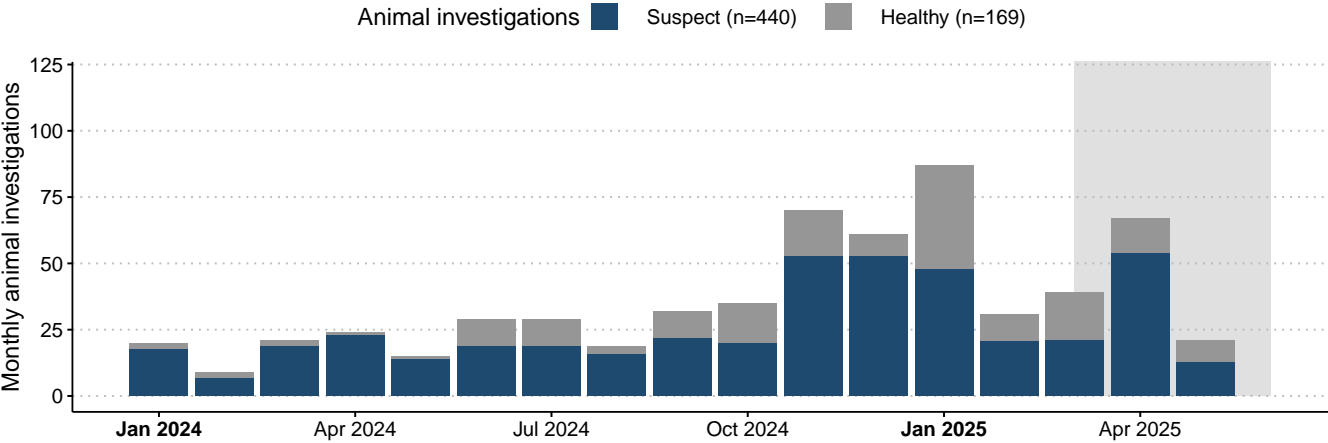
Data in the shaded grey area may not be up to date.

High risk bites by ward

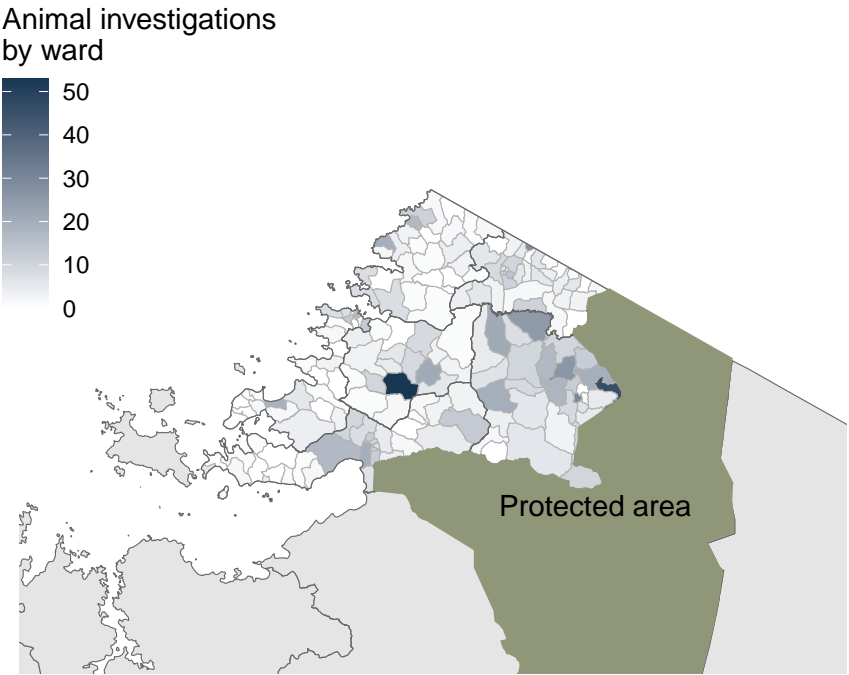


High risk bite patients and human deaths (black points; n = 17) since Jan 2024.

Reported outcomes of animal investigations



Data in the shaded grey area may not be up to date.



Suspect animal investigations and confirmed animal cases (black points; n =117) since Jan 2024.

High risk human bites, number first dose PEP, human deaths, suspect animal investigations, and confirmed animal cases (RDT) reported by district since Mar 2025

District	High risk bites	Total bites	PEP received	Human deaths	Suspect animal investigations	Confirmed animal cases
Bunda DC	0	0	0	3	0	0
Bunda TC	9	10	13	0	9	0
Butiama DC	19	25	29	1	19	0
Musoma DC	2	3	0	0	2	0
Musoma MC	8	12	8	0	8	0
Rorya DC	1	1	3	1	1	0
Serengeti DC	26	49	17	7	26	28
Tarime DC	13	16	15	0	13	0
Tarime TC	10	11	12	0	10	0

For more information see the [dashboard: https://boydorr.gla.ac.uk/rabies/rabies_TZ_s/](https://boydorr.gla.ac.uk/rabies/rabies_TZ_s/)